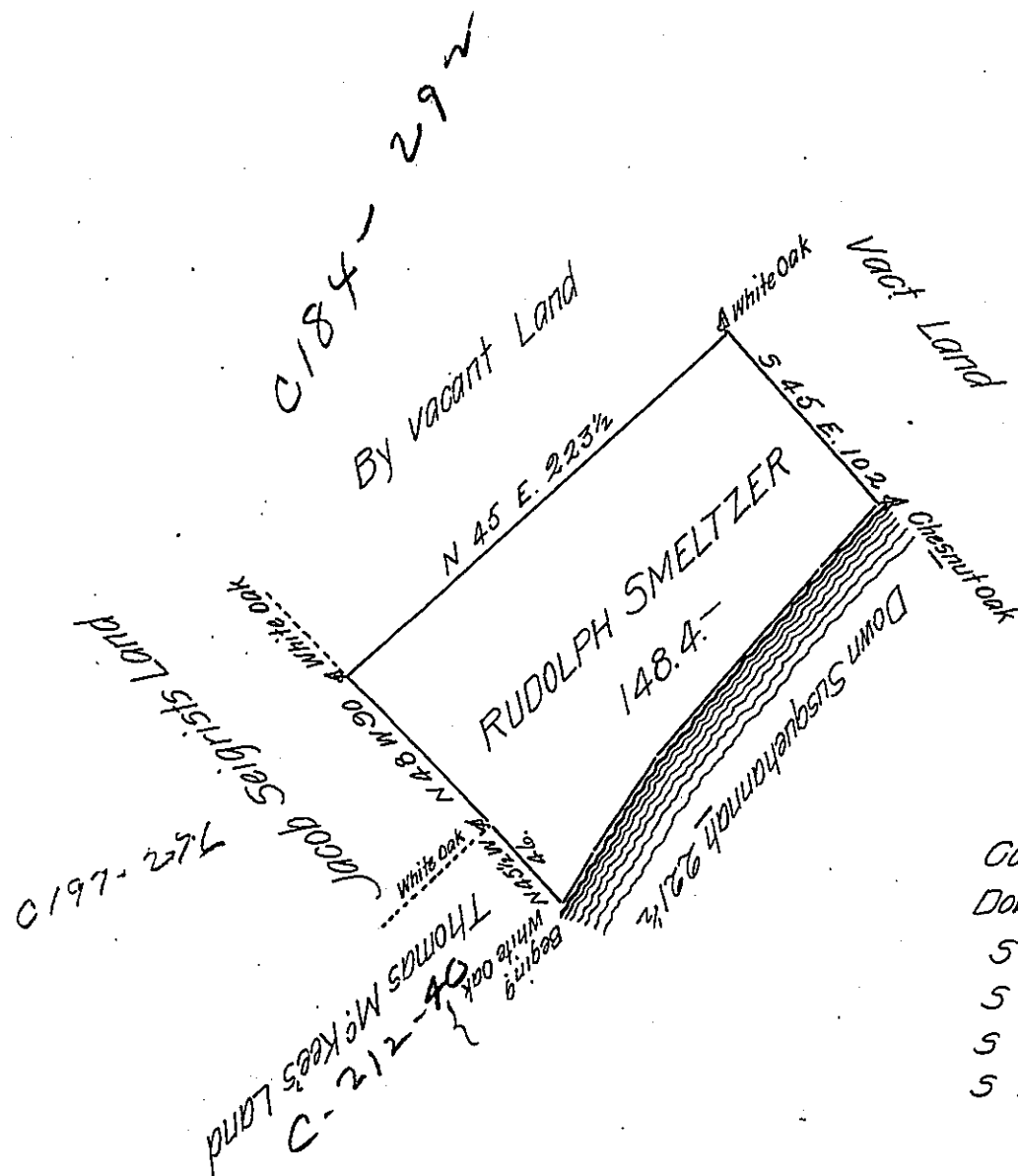


FORM No. 1.



Courses & Distances
 Down Susquehanna
 S 42 W 38.
 S 38 W 108.
 S 32 W 48.
 S 28 W 27 1/2
 221 1/2

The Draught of a Tract of Land called Wittmer's Platz situate on Susquehanna River in the County of Cumberland containing One Hundred Forty Eight Acres 74 Perches with the usual Allowance of Six Acres Per Cent for Roads. Survey'd the 26th day of June Anno Dom: 1769 In Pursuance of an Order of Survey to Rudolph Smeltzer Bearing Date at Philad^a the 7th day of August Anno Dom: 1766 and Numbered 800.

W^m Maclay D.S.

To John Lukens Esq. S.G.
 of Pennsylvania

IN TESTIMONY that the above is a copy of the original remaining on file in the Department of Internal Affairs of Pennsylvania, made conformably to an Act of Assembly approved the 16th day of February 1833, I have hereunto set my hand and caused the Seal of said Department to be affixed at Harrisburg, this twentysixth day of April 1907.

George B. Brown
 Secretary of Internal Affairs.